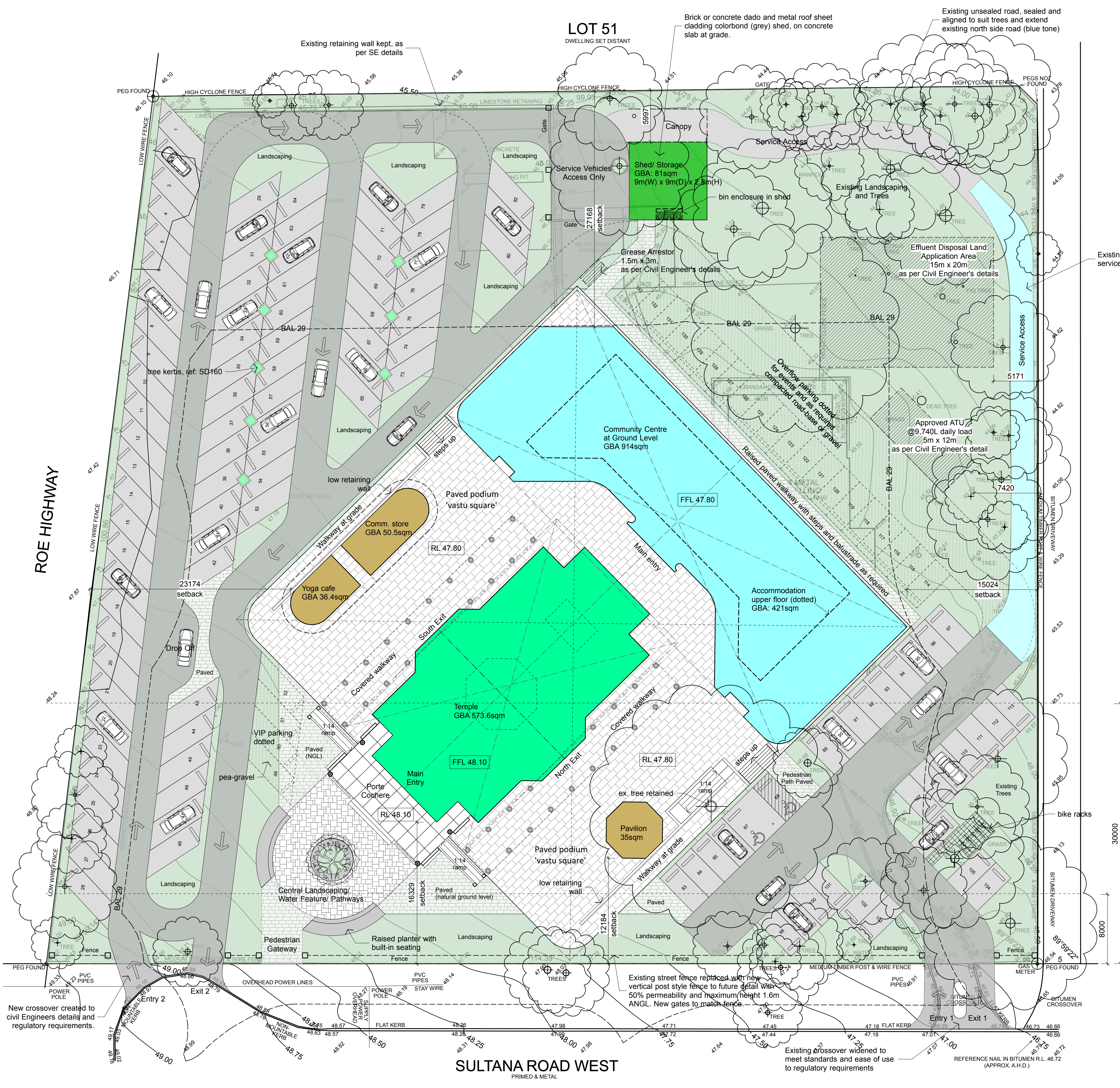


- General Notes**
1. Notify DnA Architects of discrepancies before proceeding
 2. This drawing is not for tender or construction purposes
 3. Areas and dimensions are indicative only and should not be used for accurate feasibility or cost analysis purposes
 4. All dimensions are measured from center to center of wall
 5. Based on Feature Survey supplied by Survey Solutions WA, DnA Architects can not be responsible for inaccuracies or discrepancies



- Notes:**
1. Off street car parking 133 bays including 24 over-flow bays for events (shown dotted)
 2. Typical parking bays are 2.4m x 5.5m - refer to Traffic Impact Assessment (TIA) report
 3. All existing trees as per the feature survey are shown for information. Refer to Landscape drawing to identify retained trees.
 4. External Areas:
 Site Area: 10,895sqm,
 Sealed roads: 1,832sqm,
 Service road: 316sqm,
 Parking bays: 1,840sqm,
 Overflow parking and associated access: 659sqm
 Soft Landscaping: 2,557sqm (23.5% of site)
 Hard Landscaping:
 - General Paving: 539sqm
 - Vastu Square: 1,329sqm
 - Temple porte cochere: 88sqm
 5. A raised Vastu Square paved 'podium' is placed centrally and orientated East-West to meet Vastu design principles. Beyond the Vastu Square existing natural ground levels are maintained subject to final contouring of road finish to suit car park and hard landscape drainage to future detail.
 6. All stormwater run off and surface drainage to be collected and managed within the site boundaries.
 7. Existing side and rear fences retained and refurbished as required. Street fencing replaced with new (see note).
 8. Refer to Landscape Plan SD160 for new carpark trees and planting.

ISSUE	DATE	ISSUE NOTE
9	23/02	Issued to SKGCN and City of Katanning
8	28/10/19	Issue to SKGCN for DA Application
7	17/10/19	Issue to SKGCN
6	11/09/19	Issue to SKGCN - DR12
5	10/10/19	Issue to SKGCN
4	07/11/19	Issue to SKGCN
3	18/09/19	Issue to SKGCN for Design Review #
2	28/05/19	Issued to SKGCN

REVISION	DATE	REVISION NOTE
M	18/02/20	Future received and in West corner for future turning circle as per structural Plan was removed due to non-structural use
L	24/10/19	CC adjusted for BAL, trees, paving, bins, added over-flow parking bays, grass areas, retained trees, added new gates, removed, refer to SD160 for new car park trees
K	15/10/19	Revised roof details and parking lots
J	10/11/19	Reposition the building and Vastu Square based on updated BAL (not used)
I	6/10/19	Revised parking layout, to incorporate Client review received 23/9/19
G	17/09/19	Updated to suit 5000 Ground Floor Plan
F	10/09/19	Footings revision 1: changed site layout and external works
E	24/7/19	Landscaping shown
D	11/7/19	Parking revised, more pedestrian paths, new trees added
C	4/7/19	New building layout as per Vastu design, parking redesign, inner Vastu Square established, etc
B	28/5/19	Parking and internal roads redesigned, moved Temple to be 6m from Access, Service Road added
A	14/04/19	Establish drawing

PROJECT
 Krishna Temple and Community Centre

CLIENT
 ISKCON Perth

DRAWING
 Site Plan - Proposed
 Schematic Design,
 DA Application Issue



PROJECT NO. 1989 **DWG NO.** SD 150 **REV.** M

DATE 12/05/2019

SCALE @ A1 1:250 @ A1

DRAWN LA **CHECKED** WJD

DnA Architects 200 box 242 wembley wa 6913
 dna-architects group (p) 08 9388 30 115 047 866, AA Licence: 2008, Copyright ©
 T: 018 6500 0240 W: www.dna-architects.com.au E: mail@dna-architects.com.au

1 Site Plan Proposed
 1:250 @ A1